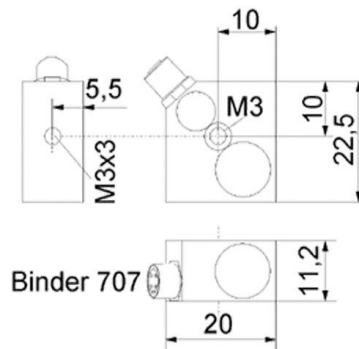


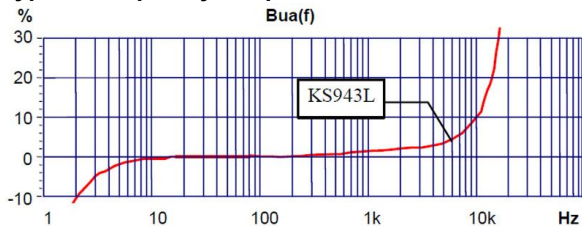
## Properties

- Small dimensions
- Central drilling for easy mounting and axis alignment
- Low-power IEPE output for power-saving operation

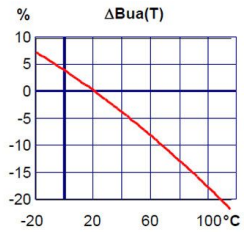


Piezo design	Shear design	
Output	Low-power IEPE	
Voltage sensitivity	14	mV/g
Sensitivity tolerance	20	%
Measurement range, pos./neg.	240	g
Destruction limit	8000	g
Transverse sensitivity	<5	%
Lower frequency limit (3 dB)	0,3	Hz
Upper frequency limit (3 dB)	19000 (Z)	Hz
Lower frequency limit (10 %)	0,7	Hz
Upper frequency limit (10 %)	10000 (Z)	Hz
Lower frequency limit (5 %)	0,9	Hz
Upper frequency limit (5 %)	6000 (Z)	Hz
Resonant frequency	>33 (Z)	kHz
Resonance amplitude	25	dB
Constant current supply	0,1 - 4	mA
Bias voltage at 4 mA	4 - 6	V
Output impedance	<1200	Ω
Residual noise; wide band; RMS	<1000 (3 - 50000 Hz)	μg
Operating temperature range	-20 - 90	°C
Temperature coefficient of voltage sensitivity	-0,17 ( °C)	%/K
Temperature transient sensitivity	3	m/s <sup>2</sup> /K
Weight without cable	16	g
Case material	Aluminum	
Connector direction	radial	
Connector	Binder 707	
Mounting	M3 (Y/Z)	

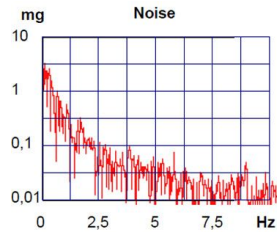
## Typical Frequency Response



## Temperature Coefficient



## Noise Characteristics



## Connection Accessories

- 091-B707-B711-3

## Mounting Accessories

- 308
- 140

## Delivery version with accessories kit KS943L/01

- KS943L
- 034-B711f-BNC
- 308
- 021

**Notice:** The standard delivery includes an individual data sheet.  
Upon request, we also offer DAkkS-accredited calibration.

Manfred Weber

**Metra Mess- und Frequenztechnik in Radebeul e.K.**

Meissner Str. 58

D-01445 Radebeul

Tel. +49-(0)351-836 2191

Internet: [www.MMF.de](http://www.MMF.de)

Email: [Info@MMF.de](mailto:Info@MMF.de)

Fax: +49-(0)351-836 2940

10.22

