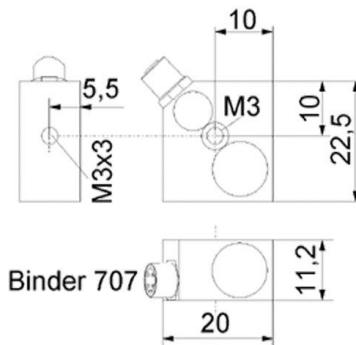


Triaxial Accelerometer

KS943B10

Properties

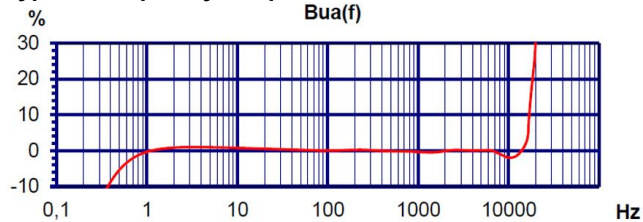
- Small dimensions
- Central drilling for easy mounting and axis alignment
- Applicable up to 120 °C
- Two sensitivity versions (10 and 100 mV/g)



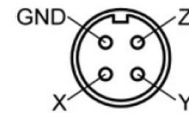
Piezo design	Shear design	
Output	IEPE	
Voltage sensitivity	10	mV/g
Sensitivity tolerance	5	%
Measurement range, pos./neg.	600	g
Destruction limit	8000	g
Transverse sensitivity	<5	%
Lower frequency limit (3 dB)	0,2	Hz
Upper frequency limit (3 dB)	22000 (Z); 12500 (X/Y)	Hz
Lower frequency limit (10 %)	0,4	Hz
Upper frequency limit (10 %)	17000 (Z); 8000 (X/Y)	Hz
Lower frequency limit (5 %)	0,6	Hz
Upper frequency limit (5 %)	15000 (Z); 6300 (X/Y)	Hz
Resonant frequency	>42 (Z)	kHz
Resonance amplitude	25	dB
Constant current supply	2 - 20	mA
Bias voltage at 4 mA	12 - 14	V
Output impedance	<150	Ω
Residual noise; wide band; RMS	<3000 (0,5 - 20000 Hz)	μg
Noise density 1 Hz	750	μg/√Hz
Noise density 10 Hz	150	μg/√Hz
Noise density 100 Hz	40	μg/√Hz
Noise density 1000 Hz	10	μg/√Hz
Operating temperature range	-20 - 120	°C
Temperature coefficient of voltage sensitivity	0,05 (<20 °C)	%/K
	±0,02 (20 - 80 °C)	%/K
	-0,06 (>80 °C)	%/K
Temperature transient sensitivity	0,03	m/s²/K
Weight without cable	14	g
Case material	Aluminum	
Connector direction	radial	
Connector	Binder 707	
Mounting	M3 (Y/Z)	



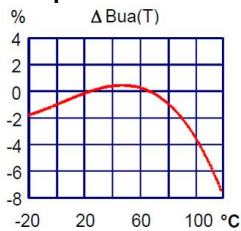
Typical Frequency Response



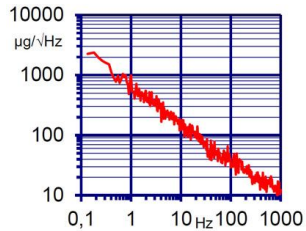
Contact Arrangement



Temperature Coefficient



Noise Characteristics



Connection Accessories

- 091-B707-B711-3: Cable for IEPE sensors; 3 m; Binder 707; 4 pins to Binder 711; male; 120 $^{\circ}C$; D2,1
- 034-B711f-BNC: Adapter Binder 711; 0,5 m; 4 pin; female. to 3 x BNC; male; 80 $^{\circ}C$

Mounting Accessories

- 308: Rare earth magnetic base; M3; D22; 120 $^{\circ}C$
- 329: Adhesive insulating flange; M3; D20; 110 $^{\circ}C$
- 140: Adapter for strap attachment on curved surfaces; M3
- 700: Underwater pressure hull for installation of sensors; 20 Bar

Delivery version with accessories kit KS943B10/01

- 091-B707-B711-3: Cable for IEPE sensors; 3 m; Binder 707; 4 pins to Binder 711; male; 120 $^{\circ}C$; D2,1
- 034-B711f-BNC: Adapter Binder 711; 0,5 m; 4 pin; female. to 3 x BNC; male; 80 $^{\circ}C$
- 308: Rare earth magnetic base; M3; D22; 120 $^{\circ}C$
- 329: Adhesive insulating flange; M3; D20; 110 $^{\circ}C$
- 021: Mounting stud; M3 x 6

Notice: The standard delivery includes an individual data sheet.

This is a non-accredited measurement/calibration and consequently not covered by EA MLA.
On request, we offer a DIN EN ISO/IEC 17025:2018 accredited calibration
of the measurand acceleration in the measuring range 0.1 m/s^2 to 200 m/s^2 .



Manfred Weber

Metra Mess- und Frequenztechnik in Radebeul e.K.

Meissner Str. 58

01445 Radebeul

Tel. +49 (0)351 836 2191

Internet: www.MMF.de

Email: Info@MMF.de

Fax: +49 (0)351 836 2940

08.23

