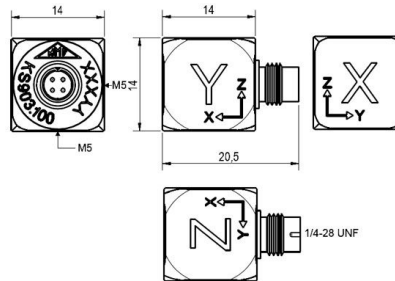


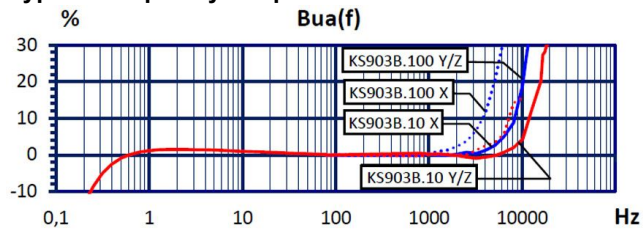
Properties

- Small dimensions
- Excellent phase response
- High resolution
- Low temperature coefficient
- Includes electronic data sheet (TEDS; IEEE 1451.4; Template 25 w. DS2431)
- Well suited for modal and structural analysis
- Two sensitivity versions (10 and 100 mV/g)

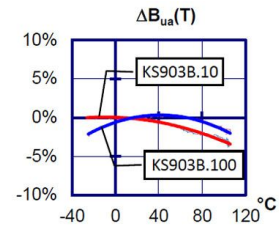


Piezo design	Shear design	
Output	IEPE	
Voltage sensitivity	100	mV/g
Sensitivity tolerance	10	%
Measurement range, pos./neg.	60	g
Destruction limit	3000	g
Transverse sensitivity	<5	%
Lower frequency limit (3 dB)	0,15	Hz
Upper frequency limit (3 dB)	7000 (X); 12000 (Y/Z)	Hz
Lower frequency limit (10 %)	0,25	Hz
Upper frequency limit (10 %)	4000 (X); 7000 (Y/Z)	Hz
Resonant frequency	>13 (X); >15 (Y); >17 (Z)	kHz
Resonance amplitude	25	dB
Constant current supply	2 - 20	mA
Bias voltage at 4 mA	12 - 14,5	V
Output impedance	<100	Ω
Residual noise; wide band; RMS	<400 (0,5 - 20000 Hz)	μg
Noise density 1 Hz	150	μg/√Hz
Noise density 10 Hz	25	μg/√Hz
Noise density 100 Hz	7	μg/√Hz
Noise density 1000 Hz	2	μg/√Hz
Operating temperature range	-30 - 100	°C
Temperature coefficient of voltage sensitivity	±0,04 (<0 °C)	%/K
	0,02 (0 - 40 °C)	%/K
	±0,01 (40 - 80 °C)	%/K
	-0,02 (>80 °C)	%/K
Temperature transient sensitivity	0,13	m/s²/K
Magnetic field sensitivity	2,9	m/s²/T
Weight without cable	9	g
Case material	Aluminum; hard coated	
Connector direction	axial/radial	
Connector	1/4-28 UNF male	
Mounting	M5 (Y/Z); adhesive	

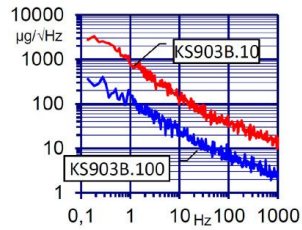
Typical Frequency Response



Temperature Coefficient



Noise Characteristics



Connection Accessories

- 091-CMR-B711-3

Mounting Accessories

- 002
- 045
- 708

Delivery version with accessories kit KS903B100/01

- KS903B100
- 091-CMR-B711-3
- 029
- 034

Notice: The standard delivery includes an individual data sheet.
Upon request, we also offer DAkkS-accredited calibration.

Manfred Weber

Metra Mess- und Frequenztechnik in Radebeul e.K.

Meissner Str. 58

D-01445 Radebeul

Tel. +49-(0)351-836 2191

Internet: www.MMF.de

Email: Info@MMF.de

Fax: +49-(0)351-836 2940

10.22

