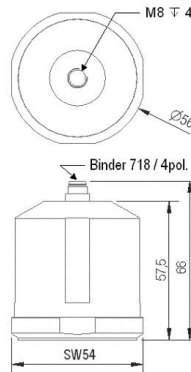


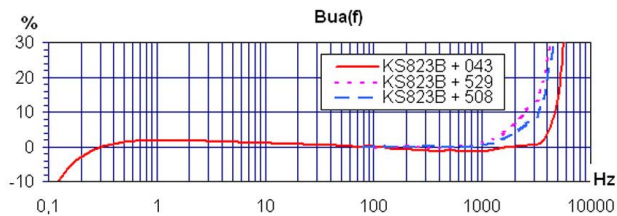
Properties

- High-sensitivity accelerometer for lowest acceleration
- Extremely low noise
- Protection grade IP67
- Accessories for measurements at floors and walls

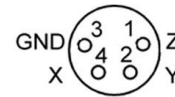


Piezo design	Shear design	
Output	IEPE	
Voltage sensitivity	500	mV/g
Sensitivity tolerance	5	%
Measurement range, pos./neg.	12	g
Destruction limit	2000	g
Transverse sensitivity	<5	%
Lower frequency limit (3 dB)	0,07	Hz
Upper frequency limit (3 dB)	6000	Hz
Lower frequency limit (10 %)	0,13	Hz
Upper frequency limit (10 %)	4800	Hz
Lower frequency limit (5 %)	0,17	Hz
Upper frequency limit (5 %)	4000	Hz
Resonant frequency	>9	kHz
Resonance amplitude	25	dB
Constant current supply	2 - 20	mA
Bias voltage at 4 mA	12 - 14	V
Output impedance	<100	Ω
Residual noise; wide band; RMS	<26 (0,5 - 10000 Hz)	μg
Noise density 0.1 Hz	30	μg/√Hz
Noise density 1 Hz	8	μg/√Hz
Noise density 10 Hz	1,5	μg/√Hz
Noise density 100 Hz	0,5	μg/√Hz
Noise density 1000 Hz	0,2	μg/√Hz
Operating temperature range	-30 - 90	°C
Temperature coefficient of voltage sensitivity	-0,05	%/K
Temperature transient sensitivity	0,0005	m/s²/K
Weight without cable	365	g
Case material	Stainless steel	
Connector direction	axial	
Connector	Binder 718	
Mounting	M8	
IP code	IP67	

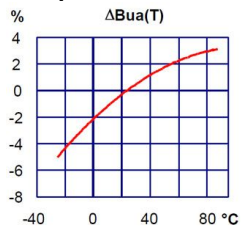
Typical Frequency Response



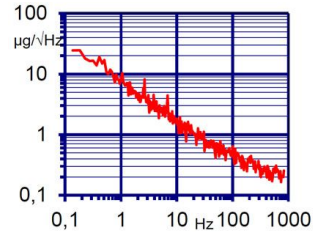
Contact Arrangement



Temperature Coefficient



Noise Characteristics



Connection Accessories

- 088-B718G-PIG-5: Cable for IEPE sensors; 5 m; Binder 718; 4 pins; female. to pig tail; 80 °C; D5
- 088-B718G-B711-5: Cable for IEPE sensors; 5 m; Binder 718; 4 pins; female. auf Binder 711; male; 80 °C; D5
- 034-B711f-BNC: Adapter Binder 711; 0,5 m; 4 pin; female. to 3 x BNC; male; 80 °C

Mounting Accessories

- 508: Rare earth magnetic base; M8 tap; D54; 80 °C
- 529: Mounting disk without swivel for KS823B
- 629: Mounting disk with swivel for KS823B incl. 10 hammer-set anchors for concrete/stone
- 729: Tripod floor plate to DIN 45669-2

Delivery version with accessories kit KS823B/01

- 088-B718G-B711-5: Cable for IEPE sensors; 5 m; Binder 718; 4 pins; female. auf Binder 711; male; 80 °C; D5
- 034-B711f-BNC: Adapter Binder 711; 0,5 m; 4 pin; female. to 3 x BNC; male; 80 °C
- 508: Rare earth magnetic base; M8 tap; D54; 80 °C
- 629: Mounting disk with swivel for KS823B incl. 10 hammer-set anchors for concrete/stone

Notice: The standard delivery includes an individual data sheet.

This is a non-accredited measurement/calibration and consequently not covered by EA MLA.
On request, we offer a DIN EN ISO/IEC 17025:2018 accredited calibration
of the measurand acceleration in the measuring range 0.1 m/s² to 200 m/s².



KS823B mit Dreifuß-Bodenplatte 729
KS823B with Tripod Floor Plate 729

Manfred Weber

Metra Mess- und Frequenztechnik in Radebeul e.K.

Meissner Str. 58

01445 Radebeul

Tel. +49 (0)351 836 2191

Internet: www.MMF.de

Email: Info@MMF.de

Fax: +49 (0)351 836 2940

08.23

