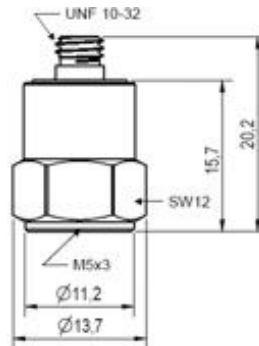


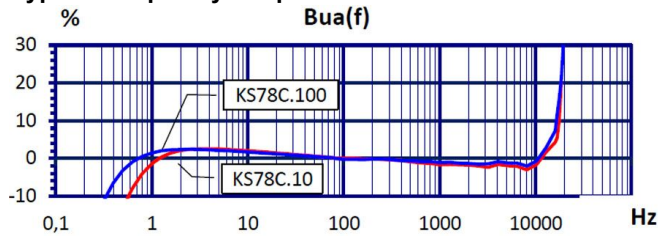
Properties

- Low-cost shear type IEPE accelerometer
- Two sensitivity versions (10 and 100 mV/g)
- Includes electronic data sheet (TEDS; IEEE 1451.4; Template 25 w. DS2431)
- Suitable for light test objects
- Insulated base against ground loops

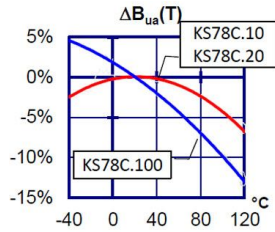


Piezo design	Shear design	
Output	IEPE	
Voltage sensitivity	10	mV/g
Sensitivity tolerance	20	%
Measurement range, pos./neg.	500	g
Destruction limit	6000	g
Transverse sensitivity	<5	%
Lower frequency limit (3 dB)	0,35	Hz
Upper frequency limit (3 dB)	23000	Hz
Lower frequency limit (10 %)	0,7	Hz
Upper frequency limit (10 %)	18000	Hz
Lower frequency limit (5 %)	1,4	Hz
Upper frequency limit (5 %)	15000	Hz
Resonant frequency	>46	kHz
Resonance amplitude	25	dB
Constant current supply	2 - 20	mA
Bias voltage at 4 mA	12 - 14,5	V
Output impedance	<100	Ω
Residual noise; wide band; RMS	<1000 (0,5 - 20000 Hz)	μg
Noise density 1 Hz	250	μg/√Hz
Noise density 10 Hz	70	μg/√Hz
Noise density 100 Hz	10	μg/√Hz
Noise density 1000 Hz	3	μg/√Hz
Operating temperature range	-40 - 120	°C
Temperature coefficient of voltage sensitivity	0,05 (<0 °C)	%/K
	0 (0 - 40 °C)	%/K
	-0,05 (40 - 80 °C)	%/K
	-0,07 (>80 °C)	%/K
Temperature transient sensitivity	0,1	m/s²/K
Magnetic field sensitivity	3,5	m/s²/T
Weight without cable	10.2	g
Case material	Stainless steel	
Connector direction	axial	
Connector	UNF10-32	
Mounting	M5	
Isolated mounting	yes	

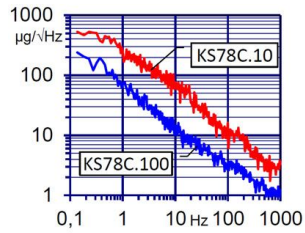
Typical Frequency Response



Temperature Coefficient



Noise Characteristics



Connection Accessories

- 009-UNF-UNF-1,5
- 010-UNF-BNC-5
- 016
- 117

Mounting Accessories

- 001
- 003
- 046
- 029

Delivery version with accessories kit KS78C10/01

- KS78C10
- 009-UNF-BNC-1,5
- 003
- 708

Notice: The standard delivery includes an individual data sheet.
Upon request, we also offer DAkkS-accredited calibration.

Manfred Weber

Metra Mess- und Frequenztechnik in Radebeul e.K.

Meissner Str. 58

D-01445 Radebeul

Tel. +49-(0)351-836 2191

Internet: www.MMF.de

Email: Info@MMF.de

Fax: +49-(0)351-836 2940

10.22

