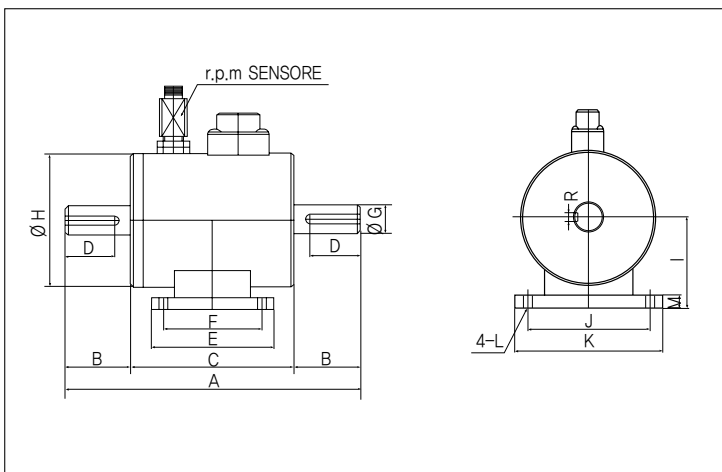


SHAFT TYPE TORQUE SENSORS

> Model TRB

Model TRB load cell measure the torque of continuous rotating object. Platinum coated connector provides long term signal stability and high accuracy. These models are most appropriate for industrial measurement. Applications include the performance testers for automotive components such as clutches, transmissions, motors and pumps.

※Option : r.p.m. sensor, Foot mount.



> SPECIFICATIONS

Specifications	Accuracy
Rated capacity(R.C)	1~100kg f-m
Rated output(R.O)	1.5mv/v±1%(1~5kg f-m:1mv/v)
Nonlinearity	0.3%R.O.
Hysteresis	0.2%R.O.
Repeatability	0.3%R.O.
Excitation recommended	10V
Terminal resistance	350Ω ±5%
Insulation resistance bridge	200MΩ
Temperature effect, on rated output	0.3% R.O/10°C
Temperature effect, on zero balance	0.2% Load/10°C
Safe overload	120% R.C
Cable length	Ø 7.4core cable 3m

> DIMENSIONS TABLE

unit:mm

Model	Capacity	A	B	C	D	E	F	ØG	ØH	I	J	K	ØL	M	R	R.P.M
TRB-1K	1kgf-m(9.807N-m)	191	43	105	38	68	50	18	72	41	72	86	7	8.5	5×5	5000
TRB-2K	2kgf-m(19.61N-m)	191	43	105	38	68	50	18	72	41	72	86	7	8.5	5×5	5000
TRB-5K	5kgf-m(49.03N-m)	191	43	105	38	68	50	18	72	41	72	86	7	8.5	5×5	5000
TRB-10K	10kgf-m(98.07N-m)	260	55	150	50	100	84	32	100	63	98	115	7	12	10×8	5000
TRB-20K	20kgf-m(196.1N-m)	260	55	150	50	100	84	32	100	63	98	115	7	12	10×8	4000
TRB-50K	50kgf-m(490.3N-m)	310	80	150	70	120	98	47	118	75	124	148	9	15	12×8	4000
TRB-100K	100kgf-m(980.7N-m)	310	80	150	75	120	98	47	118	75	124	148	9	15	12×8	4000
TRB-200K	200kgf-m(1.961KN-m)	375	100	175	85	120	98	63	135	90	150	180	10.5	20	18×11	4000
TRB-300K	300kgf-m(2.942KN-m)	375	100	175	95	120	98	63	135	90	150	180	10.5	20	18×11	3000