

CAMERAS

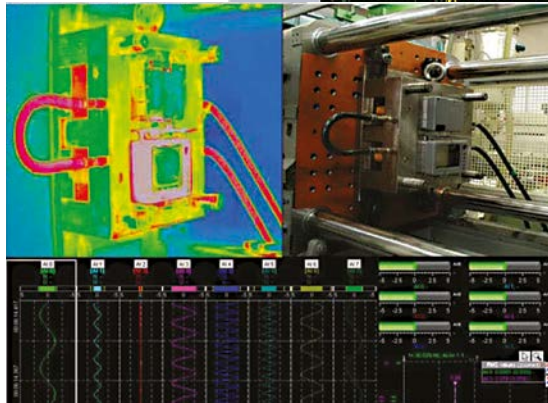
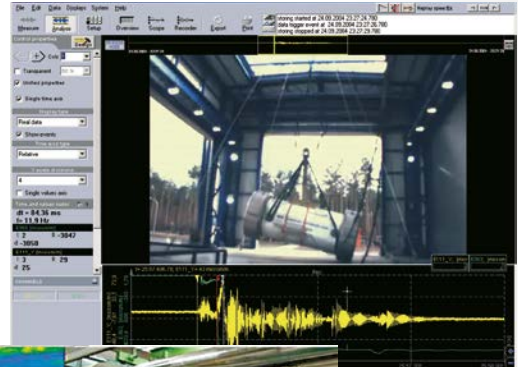
SYNCHRONIZED TO A/D CONVERTER

For applications requiring video which is truly synchronized to the dynamic sample rate, there is support for DS-Cameras. A high quality image with automatic shutter speed (selectable) is controlled directly by the A/D card, which generates a pulse to drive the camera. The result is a stunning correlation between each frame and the data.

Thermo cameras are supported from FLIR, NEC and MICRON, and high speed cameras from Photron which can acquire more than 100000 frames per second.



Video Input
Synchronized video acquisition from web-, thermo- and high speed cameras



DS-CAM-88c: 640x480 @ 88 FPS,
320x240 @ 167 FPS, 160x120 @ 289 FPS

DS-CAM-88 + DS-CAM-120



- ▶ 88 / 120 fps @ VGA (640x480)
- ▶ Auto-Shutter
- ▶ Auto-Gain
- ▶ Auto-White-Balance
- ▶ Color
- ▶ Power-over-Ethernet option

DS-CAM-600m/c:
1920x1080 (HD) @ 300 FPS, 640x480 (VGA) @ 600 FPS

DS-CAM-600



- ▶ 600 fps @ VGA
- ▶ Full HD resolution (1920x1080)
- ▶ Real-time onboard JPEG compression
- ▶ Power-over-Ethernet
- ▶ Best performance with SBOX
- ▶ Color and monochrome
- ▶ IP67 version available



APPLICATIONS

- ▶ **Machine diagnostics**
- ▶ **Product quality check**
- ▶ **Non destructive testing**
- ▶ **Research and development**
- ▶ **Automotive crash testing**
- ▶ **Impact tests**
- ▶ **Logistics & transportation**
- ▶ **Preventive maintenance**
- ▶ **Manufacturing**

All DS-CAM cameras were designed to be high-shock and vibration resistant.

The DS-CAM cameras can run in triggered (sync) and free-run mode. The video is captured by real-time data streaming, even at full resolution! Therefore a Gigabit-Ethernet port is required.

**SYSTEM REQUIREMENTS
FOR GigE CAMERAS:**

- ▶ Gigabit Ethernet LAN port
- ▶ DEWESoft® 7.1 or X
- ▶ (Clock possibility)
- ▶ Core2Duo CPU



DS-CAM-88



DS-CAM-120



DS-CAM-600



Free license

	DS-CAM-88	DS-CAM-120	DS-CAM-600	Webcam
GENERAL				
Color option	DS-CAM-88c	DS-CAM-120c	DS-CAM-600c	Yes
Monochrome option	-	-	DS-CAM-600m	Yes
OPTICAL SPECIFICATION				
Image sensor	Sony ICX414	Sony ICX618	CMOSIS CMV2000 2E5M1PP	various
Sensor type	CCD		CMOS	CCD/CMOS
Resolution	VGA resolution 640x480		Full HD resolution 1920x1080	1280x720
FPS	88 FPS @ 640x480 167 FPS @ 320x240 289 FPS @ 160x120	120 FPS @ 640x480	600 FPS @ 640x480 300 FPS @ 1920x1080 1460 FPS @ 320x240	30 FPS
Optical size	1/2"	1/4"	Diagonal 12.7 mm (2/3")	various
Pixel size (in µm)	9.9 x 9.9	5.6 x 5.6	5.5 x 5.5	various
Dynamic range	35 dB autogain function	32 dB autogain function	60 dB	various
Shutter	Full frame		Electronic Global Shutter	-
Shutter time	26 ns - 60 s (autoshutter function)	58 µs - 60 s (autoshutter function)	210 ns - 90 s	-
Color correction	auto white-balance		DS-CAM-600c: yes DS-CAM-600m: no	Yes
MECHANICAL SPECIFICATIONS				
Operating temperature	+5..+45°C		0..+50°C	0..+45°C
Operating humidity	25% - 80% (no condensation)		25% - 80% (no condensation) IP67 protected version available: DS-CAM-600cw	25% - 80% (no condensation)
Dimensions	86.4 x 44 x 29 mm (3.40 x 1.73 x 1.14 in)		54 x 40 x 92 mm (2.13 x 1.57 x 3.63 in)	various
Lens mount	C-mount		C-mount (1" 32G thread)	-
Connectors	Screw mount GigE RJ45; EIAJ (Hirose) 12 pin		Gigabit Ethernet: RJ45	USB
Conformity	CE, FCC, RoHS, GigE Vision, GenICam (PoE IEEE 802.3at)		CE, EN55022, class A; EN61000-4-2; EN61000-4-3; EN61000-4-4; EN61000-4-6; FCC Part 15, class A RoHS, GigE Vision 1.2	Direct X
ELECTRICAL SPECIFICATIONS				
Supply voltage	+8 to +30 VDC		Power-over-Ethernet (42-57 V)	USB (5 V)
Power-over-Ethernet	optional		yes	-
Power consumption	3.6 W		6 W	2 W

CAM-BOX1

Adapter box for connecting up to 4 DS-CAM-88/120 to the DEWESoft® instrument. Combines Sync and Power to the camera connector. External GigE switch required.



CAM-BOX2

Distribution box for connecting up to 4 x DS-CAM-88/120 to the DEWESoft® instrument. Wide range supply input (9-36V DC), integrated GigE switch



CAM-BOX3

Distribution box for connecting up to 4 x DS-CAM-600 to the DEWESoft® instrument. Wide range supply input (9-36 V DC), integrated GigE switch with 4 x PoE; SIRIUS® chassis with 1.5 U height

